



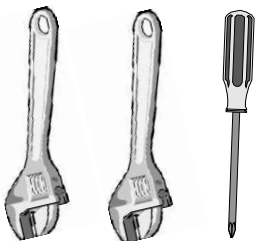
Australia
North America
New Zealand

Signature Side Burner

Assembly And Operating Instructions



Outdoor Use Only



Australia's Leading Barbecue



Safety Warnings



- **WARNING:** We want you to enjoy your barbecuing experience - Failure to follow the instructions and observe the warnings provided in this operating manual could result in serious bodily injury or damage to property.
- **NOTE TO INSTALLER:** This manual must remain with the owner for future reference.

For Your Safety

1. Do not store or use gasoline or other flammable vapors or liquids in the vicinity of this or any other appliance.
2. An LPG/Propane cylinder not connected for use shall not be stored in the vicinity of this or any other appliance.

For Your Safety

If you smell gas:

1. Shut off gas to the appliance
2. Extinguish any open flame.
3. Open lid.
4. If odour continues, immediately call your gas supplier or your fire department.

*In this manual, LPG refers to the mix of propane and butane applicable in your country.
Read in conjunction with your main barbecue instructions*

Safe Lighting

- Always leak-test with a solution of soapy water. Do not test for gas leaks with a naked flame.
- Always fully open the roasting hood or remove the metal lid of the appliance before lighting.
- Visually check burner flames to confirm lighting.
- Do not lean over barbecue when lighting.
- Do not use charcoal or any other solid fuel in this appliance.

Safe Care and Maintenance

Keep your barbecue clean and in good working order. In particular:

- After cooking turn barbecue to high for up to 10 minutes to burn off excess grease.
- Let the barbecue cool before replacing any lid or cover.
- Regularly empty and clean grease receptacle.
- Clean the appliance at least twice annually.
- Check main opening, throat and venturi to each burner and pilot flame tube regularly for insect nests (eg. wasp, ants or spiders). Nests are dangerous and must be cleaned out thoroughly.
- Do not use caustic based cleaning agents on the barbecue.
- Check all gas hoses and line connections for damage, cuts or cracks each time the appliance is to be used.
- Do not attempt to modify the appliance. Any modification to this appliance may be dangerous.
- Do not attempt to dismantle or adjust control valves or regulator.

Safe Operation

This barbecue becomes very hot during use, so:

- Keep young children away.
- When handling hot components, the use of protective gloves is recommended.
- Do not allow the flexible gas supply hose or any electrical cord to come in contact with any heated surface of the appliance.
- **DO NOT** wear loose garments or sleeves when using the barbecue.
- Do not leave your barbecue unattended whilst in use.
- Do not use plastic or glass utensils on the barbecue.
- Do not operate barbecue in strong winds.
- Do not move the appliance during use.
- Do not allow children to operate this appliance.
- Do not operate window roasting hoods in the rain.
- Do not disconnect any gas fittings while the appliance is operating.
- Make sure long handles do not hang over the edge of the side burner. Injury can result if they are accidentally knocked.



- Should the appliance go out for any reason, turn off all control knobs and the cylinder gas valve. Wait 5 minutes before attempting to relight the appliance.
- A leak test must be carried out prior to using the appliance for the first time and whenever the gas cylinder is refilled or whenever the gas hose and regulator have been disconnected from the gas cylinder or appliance.



Locating Your Barbecue And Side Burner

Most importantly, this is an outdoor appliance. Ensure it is positioned safely away from anything that can catch fire.

Indoor Use Only: Under no circumstances is this side burner to be used indoors. This includes garages or any other enclosed area.

Clearance From Combustibles: Ensure the side burner remains at a distance of at least 45 cm (18") from any combustible material such as wood, gyprock, paper and plants. Do not store combustible materials, gasoline or flammable liquids or vapours within 45 cm (18") of the appliance.

Adequate Ventilation: Ensure there is adequate ventilation for the appliance and cylinder. This is required not only for proper combustion, but also to prevent gas build up.

Firm Level Surface: Use your barbecue only on a firm level surface. This appliance is not designed for recreational vehicles, and shall not be installed on a boat or any marine craft.

Protection From Weather: Keep the side burner protected from adverse weather, including rain and high winds. Polyvinyl covers are available that have been specially designed for this range of barbecues.

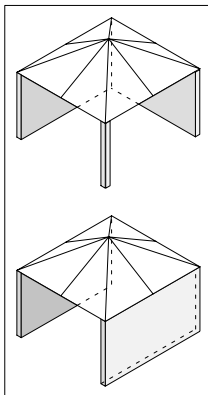
Allow clear access to the entire gas supply hose and regulator.

Maintenance Access: When your side burner is installed, you should be able to access the gas supply line including the gas piping or hose, gas regulator, gas cylinder and any shut off valves.

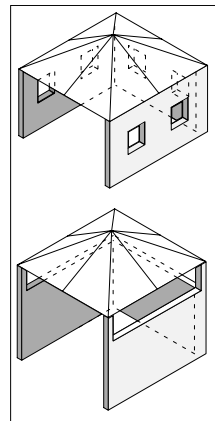
Partial Enclosures: Many backyards have areas that are partially closed off, such as balconies and pergolas. In some cases, it is hard to decide whether these partially enclosed areas should be classified as indoor areas, particularly in terms of permanent (non-closable) ventilation. The gas safety authorities have agreed on the definition of partial enclosures below.

Partial Enclosures (Australia Only)

This appliance shall only be used in an above ground, open air situation with natural ventilation, without stagnant areas, where gas leakage and products of combustion are rapidly dispersed by wind and natural convection. Any enclosure in which the appliance is used shall comply with one of the following:



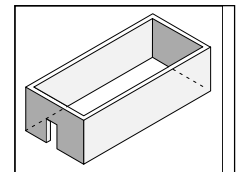
Within a partial enclosure that includes an overhead cover and no more than two walls.



Within a partial enclosure that includes an overhead cover and more than two walls, the following shall apply:

- At least 25% of the total wall area is completely open; and
- at least 30% of the remaining wall area is open and unrestricted.

In the case of balconies, at least 20% of the total of the side, back and front wall areas shall be and remain open and unrestricted.



Any enclosure with walls on all sides, but at least one permanent opening at ground level, and no overhead cover.



Assembly And Gas Connection Instructions

Check The Gas Type

Before beginning installation or assembly, check that the gas type which the barbecue and side burner are designed for is correct for the gas available to you. In most countries the choices are natural gas or LPG/propane. You will find the gas type label on the side of your barbecue. If your barbecue uses the incorrect gas type, or if you are unsure, consult your dealer before going any further. Using the wrong type of gas for a barbecue is extremely dangerous.

Natural Gas Conversion: Most newly purchased barbecues are made for LPG/propane. A natural gas conversion kit is available to allow your barbecue to run on natural gas. **NOTE:** gas conversion must be carried out by an authorised BeefEater service agent or licensed gas fitter.



Assembly

Attach your side burner to your barbecue trolley as explained in the separate barbecue/trolley instructions.

Attach The Trivet

Place the trivet on the body of the side burner. The small notches underneath the trivet should sit neatly in the holes in the steel, as shown.



Temporarily Remove The Drip Plate

In order to properly connect the hoses to the side burner, you may find it easier to remove the drip plate from underneath the side burner.

Simply undo the screw at the front of the side burner as shown, and then ease the rear drip plate tabs from the side burner body.

You now have clear access to the side burner inlets.



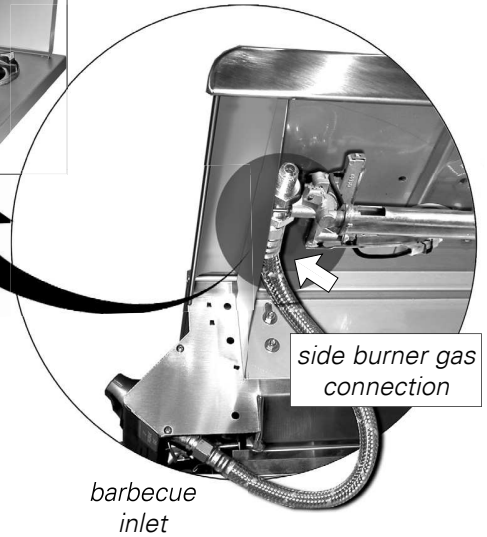


Connection to Barbecue

Ensure all gas controls on the barbecue and side burner are set to OFF.

Take the connector hose that came with the side burner. Connect one end to the inlet of the barbecue. Connect the other end to the left side gas connection point of the side burner.

If your barbecue came with a cabinet trolley/cart, your connector hose should already be attached to the barbecue inlet (as indicated by the separate cart instructions). In this case, simply pass the free end of the hose through the hose access hole in the side of the cart prior to connecting to the side burner inlet.



connector hose

Connection To Gas Supply

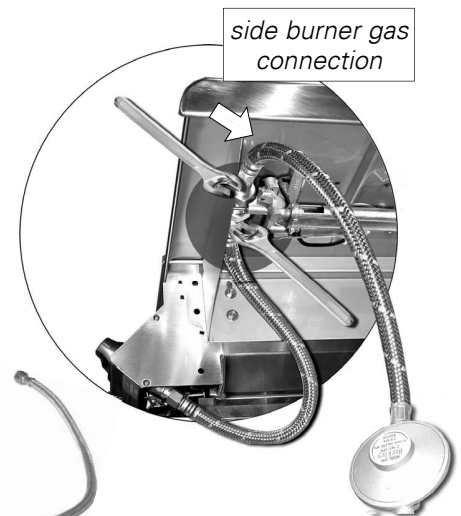
Ensure all gas controls on the barbecue and side burner are set to OFF.

Attach the gas supply hose to the right side inlet of the side burner. If the gas supply hose is not already attached to the gas supply, then attach it now.

If your barbecue came with a cabinet trolley/cart, your gas supply hose may already be attached to a portable gas cylinder located inside the cabinet. In this case, simply pass the free end of the hose through the hose access hole in the side of the cart prior to connecting to the side burner inlet.

Using two spanners, tighten all gas connections. Do not overtighten.

LPG gas supply hose



Replace The Drip Plate

Push the rear drip plate tabs back into the slots at the back of the side burner body, and secure the front of the drip plate with the screw removed earlier.





Secure All Joints And Leak Test

The gas leak testing procedure should be conducted every time a gas cylinder is refilled and reconnected to the appliance, or after any new gas connection is made. Never use a naked flame to check for gas leaks.

In a small container, mix up a solution of water and detergent or soap. Mix the solution well.

Make sure that the gas supply valve on the gas cylinder or the shut off valve on the supply line is turned on.

Make sure that the gas control valves on the appliance are all turned off.

Using a brush or spray bottle apply the solution to the gas line and each joint in the gas line, including the hose and regulator.

Bubbling of the solution will indicate that there is a leak present.

Re-tighten or re-seal any joints that are leaking.

If a leak persists contact your distributor for assistance.

Operating Instructions

To turn your side burner on:

1. Raise the lid.
2. Press and turn the control knob slowly (3-4 seconds) anti clockwise to HIGH until a click is heard.
3. If the burner fails to ignite, turn the knob to OFF and repeat the process.

A low flame or simmer condition is obtained by turning the control knob anticlockwise to LOW.

The burner flame should be light blue with slight yellow tipping. If the flame is too yellow, consult your dealer before further use.

Turning Off

Turning Off - Simply turn the knob to the off position. When you have finished with your barbecue, turn the cylinder off.

Note carefully: Failure to follow the lighting and turn off procedures correctly can lead to a hazardous condition.

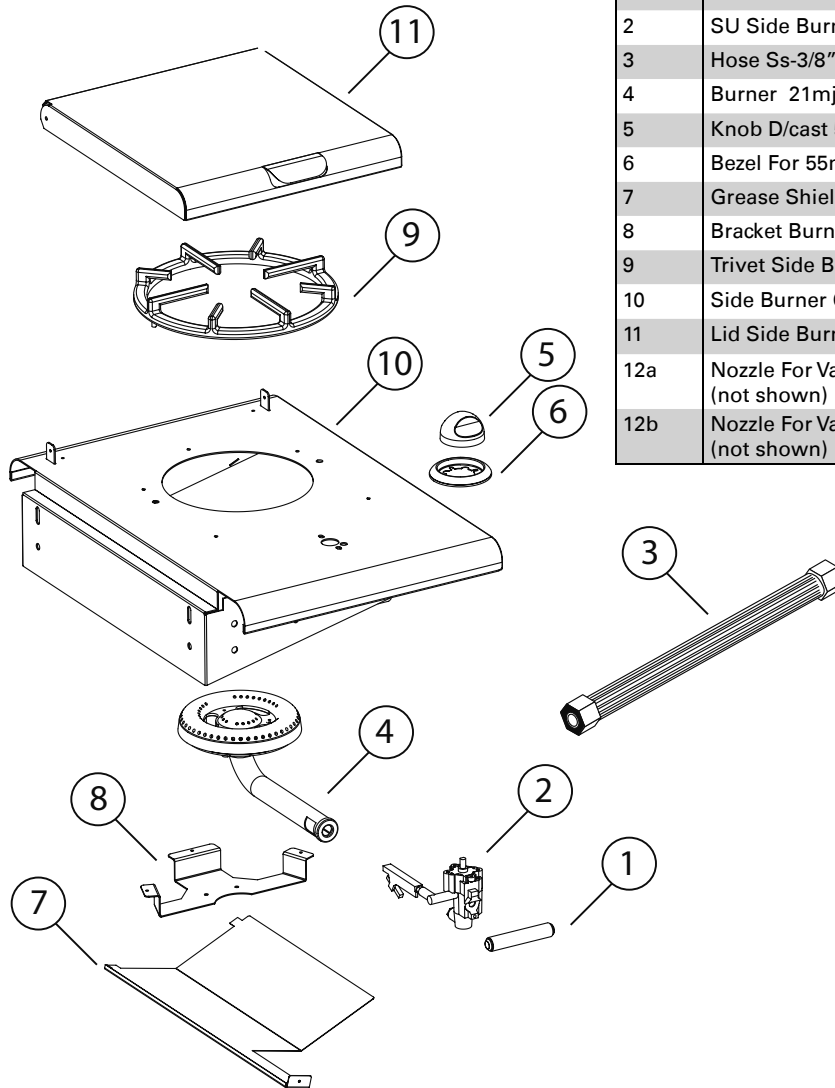
After Use

1. Turn the control knob and the gas cylinder valve off if the barbecue is not in use.
2. Clean off any food spills and lower the lid.





Signature Side Burner Spare Parts



No.	Description	Component
1	Manifold 21 MJ/hr 5/8-18unf	030525
2	SU Side Burner Gas Valve 90°	040146
3	Hose Ss-3/8" SAE Both Ends	040207
4	Burner 21mj	040252
5	Knob D/cast 55mm S/B Brush	060544
6	Bezel For 55mm Brushed	060545
7	Grease Shield Side Burner 21 MJ/hr	170123
8	Bracket Burner Side 21 MJ/hr	170124
9	Trivet Side Burner 99	170202
10	Side Burner Chassis St/st 99	170306
11	Lid Side Burner St/st 99	170307
12a	Nozzle For Valve – 1.27mm M5 (LPG) (not shown)	040164
12b	Nozzle For Valve – 2.10mm M5 (NG) (not shown)	040168

Technical Specifications

Refer to the data plate on the side of the barbecue for details of gas pressure and consumption.



Ongoing Maintenance

Stainless steel will keep its lustrous finish even under adverse conditions, although all outdoor products still need regular cleaning. Please observe the following instructions:

- Clean the appliance as required or at least twice annually with hot soapy water.
- Avoid abrasive cleaners or brushes as these will mark the stainless steel surfaces.
- The surface of the stainless steel has a grain. Always clean along the grain of the steel. This will avoid unwanted marks.
- Near the ocean or salt-water environment, more frequent cleaning is necessary. Wash regularly, rinse and then dry before covering.
- Do not cover stainless steel while it still has salt water on it. Otherwise, salt deposits will form, causing rust to appear even on very high grade stainless steel.

Discolouration of Stainless Steel

Discolouration of stainless steel, caused by high heat can sometimes appear as a light brown colouring over the surface of the steel. In most cases, this discolouration can be removed with a suitable stainless steel polish.

Note: Discolouration of the Stainless steel is not covered under warranty.

Barbecue Covers

- Barbecue Covers Are An Important Part Of Good Preventative. To prevent exposure to the elements, store your barbecue, hood and trolley under the protection of a purpose made cover.

Check all gas hoses and connections.

- Check the gas hoses every 3 months. Have them replaced if they show any signs of wear or cracking.
- Perform a leak test (as described earlier) every time a gas connection is made or broken.

Installing the Inbuilt Side Burner

This appliance can only be installed in an enclosure constructed of non combustible material.

1. Determine the position of the cutout for the side burner using the diagram shown on this page.
2. Ensure that no gas, electricity or any other services run near the position of the cutout.
3. Depending on the depth of the bench into which the side burner is being installed, it may be necessary to connect the gas hoses to the side burner first.
4. Secure the side burner by drilling through the mounting plate.

